

# MUST HAVE CONSUMABLES

Parts**Plus**<sup>+</sup>

Parts for All Vehicles

**GLOVES · VEHICLE PROTECTION · WORKSHOP  
TYRE CARE · CHEMICALS · HOSE CLIPS ·  
BATTERIES · TORCHES**



VISIT [PARTSPLUSUK.COM](https://www.partsplusuk.com) TO VIEW WIDER RANGE OF CONSUMABLES

# DISPOSABLE GLOVES

SCAN QR CODE TO  
SEE FULL GLOVE  
BROCHURE



## ONHAND GLOVES



OnHand Grip Plus deliver superior protection and comfort, with increased puncture resistance for tough tasks and an all-over textured pattern for reliable grip. They are 100% latex and powder-free, ensuring a safe and allergen-friendly choice.



OnHand Plus are 100% latex- and powder-free gloves feature a micro-textured surface for better grip, a durable yet flexible design, and a beaded cuff for easy donning. They offer high tensile strength, are Class 1 medical grade (EN 455), food contact approved (EN 1186), and certified to EN374-2, EN374-3, and PPE Category III standards.



These 100% nitrile gloves are powder and latex-free, with superior puncture resistance and no natural rubber proteins for allergen safety. Featuring high tensile strength and a beaded cuff for easy donning, they are Class 1 medical grade (EN 455) and food contact approved (EN 1186), making them versatile and reliable.

### ONHAND GRIP PLUS Orange & Black Nitrile

| Part No | Qty | Colour | Size |
|---------|-----|--------|------|
| 895833  | 90  | Orange | M    |
| 895836  | 90  | Orange | L    |
| 895839  | 90  | Orange | XL   |
| 895842  | 90  | Orange | XXL  |
| 895825  | 90  | Black  | M    |
| 895826  | 90  | Black  | L    |
| 895827  | 90  | Black  | XL   |
| 895828  | 90  | Black  | XXL  |



### ONHAND PLUS GLOVES Micro textured

| Part No | Qty | Colour | Size |
|---------|-----|--------|------|
| 895850  | 100 | Blue   | M    |
| 895851  | 100 | Blue   | L    |
| 895852  | 100 | Blue   | XL   |
| 895864  | 100 | Black  | M    |
| 895865  | 100 | Black  | L    |
| 895866  | 100 | Black  | XL   |



### ONHAND GLOVES Blue & Black Nitrile

| Part No | Qty | Colour | Size |
|---------|-----|--------|------|
| 895260  | 100 | Blue   | S    |
| 895250  | 100 | Blue   | M    |
| 895232  | 100 | Blue   | L    |
| 895222  | 100 | Blue   | XL   |
| 895744  | 100 | Black  | M    |
| 895745  | 100 | Black  | L    |
| 895746  | 100 | Black  | XL   |



### GRIPPAZ GLOVES

These durable gloves feature a patented fish scale grip, are 100% nitrile, silicone-free, powder-free, and chemical-resistant, lasting up to five times longer than standard disposables. Touch screen friendly and PPE Category III certified, they offer exceptional protection and convenience

| Part No       | Qty | Size |
|---------------|-----|------|
| GRIPPAZ246L   | 50  | M    |
| GRIPPAZ246M   | 50  | L    |
| GRIPPAZ246XL  | 50  | XL   |
| GRIPPAZ246XXL | 50  | XXL  |





# VEHICLE PROTECTION

## CAR SEAT COVERS



\*\* In a centre feed dispenser box

| Part No | Qty | Size            | Microns |
|---------|-----|-----------------|---------|
| 895056  | 100 | 1325 X 840 mm   | 25 (HD) |
| 895080  | 100 | 1300 x 800 mm** | 14      |
| 895083  | 100 | 1300 x 800 mm** | 10      |

## SHOE COVERS

Disposable

| Part No | Qty | Size     |
|---------|-----|----------|
| 895484  | 100 | One Size |



## PAPER FLOOR MATS

Disposable

| Part No | Qty | Colour |
|---------|-----|--------|
| 895081  | 500 | White  |
| 895178  | 500 | Brown  |
| 895179  | 200 | Brown  |



- 90 GSM
- 375 x 500mm

## 5-IN-1 VEHICLE PROTECTION SET

### Interior Protection

Our 5-in-1 valeting kits are ideal for use by garages and car valeters to protect your customer's interior whilst performing an MOT, service or general valet

- 1 x Disposable car seat cover
- 1 x Disposable elasticated steering wheel cover
- 1 x Disposable paper floor mat
- 1 x Disposable gear stick cover
- 1 x Disposable hand brake cover



| Part No | Qty | Type        |
|---------|-----|-------------|
| 895030  | 100 | 5 Piece Kit |



# CHEMICALS, GREASES, ADHESIVES & SEALANTS

## PUMP SPRAYER

- Suitable for use with many solvent based products
- Can use with Brake cleaner



| Part No | Qty | Size  |
|---------|-----|-------|
| 895059  | 1   | 1 Ltr |

## FIXT BRAKE & CLUTCH CLEANER

A powerful cleaning spray / fluid which is ideal for fast & effective cleaning of all brake & clutch assemblies, removing all contaminants such as grease, oil, dust & dirt

- Instantly removes brake dust, oil & grease
- Helps prevent brake squeal
- Apply without dismantling parts
- Acetone free - non-corrosive to brake rubbers

| Part No  | Qty | Size            |
|----------|-----|-----------------|
| FX081104 | 6   | 400 ml Aerosol  |
| FX081106 | 4   | 5 Ltr Plastican |



## FIXT MAINTENANCE SPRAY

A high specification, multi-purpose maintenance spray / fluid & releasing agent which also penetrates rusted & corroded fasteners, fittings & components

| Part No  | Qty | Size           |
|----------|-----|----------------|
| FX081127 | 6   | 400 ml Aerosol |



## FIXT400 MAINTENANCE SPRAY

A high specification, multi-purpose maintenance spray / fluid with outstanding penetrating properties

- '4 in 1' action for on-site problem solving
- High pressure multi-purpose spray blasts dirt away & provides access to hard to reach areas

| Part No  | Qty | Size            |
|----------|-----|-----------------|
| FX081401 | 6   | 400 ml Aerosol  |
| FX081402 | 1   | 5 Ltr Plastican |



## FIXT CLEAR GREASE

A clear, non-staining grease which penetrates deeply before it thickens

- Minimum visibility, maximum lubrication
- Ideal for brake pipes, mechanisms, hinges & linkages

| Part No  | Qty | Size           |
|----------|-----|----------------|
| FX081150 | 6   | 400 ml Aerosol |



## FIXT WHITE GREASE & PTFE

Repels water & is highly protective against corrosive elements including, heat, salt & water & provides long lasting lubrication which will not wash off

- Visible white lubricant
- Resistant to heat, salt & moisture

| Part No  | Qty | Size           |
|----------|-----|----------------|
| FX081151 | 6   | 400 ml Aerosol |





## FIXT SERVICE LUBE PLUS

A highly active formula which penetrates & then thickens following application

- Highly active formula
- Tough clean lubricant with low drip / run properties
- Easy to apply to inaccessible areas

| Part No  | Qty | Size           |
|----------|-----|----------------|
| FX081328 | 6   | 400 ml Aerosol |



## FIXT SILICONE GREASE

A highly effective silicone based grease suitable for insulating electrical connections & terminals

- Outstanding lubricating properties
- Provides high level protection against damp, water & corrosive element

| Part No  | Qty | Size           |
|----------|-----|----------------|
| FX081161 | 6   | 400 ml Aerosol |



## FIXT COPPER ANTI-SEIZE

Long lasting high temperature lubricant offering outstanding anti-seize properties

- Thick, protective lubricant for metal parts
- Eliminates corrosion, seizure & brake squeal
- Effective at temperatures up to 1100°C
- High-grip, anti-fling product, will not wash off

| Part No  | Qty | Size           |
|----------|-----|----------------|
| FX081154 | 6   | 400 ml Aerosol |



## SILICONE SPRAY LUBE

Excellent for use on many materials including metal, vinyl, rubber & wood

- Universal applications across all industries
- Highly effective on slides, bearings, conveyors & manufacturing equipment
- Lubricates window channels, CV boots & hoses

| Part No  | Qty | Size           |
|----------|-----|----------------|
| FX081125 | 6   | 400 ml Aerosol |



## FIXT PENETRATING & GRAPHITE

A graphite enhanced lubricant fluid designed to effectively & rapidly penetrate, free & loosen seized nuts, bolts, threaded components & hinges

- Tough graphite enhanced lubricant
- Powerful heavy-duty industrial formula for maximum penetration

| Part No  | Qty | Size           |
|----------|-----|----------------|
| FX081275 | 6   | 400 ml Aerosol |

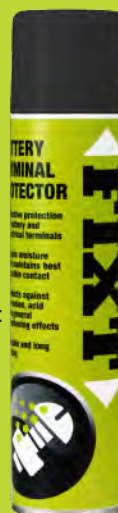


## FIXT BATTERY TERMINAL PROTECTOR

Cleans corrosive deposits which build up on battery terminals. Highly active formula

- Provides effective protection of battery & electrical terminals
- Repels moisture & maintains best possible contact
- Protects against corrosion, acid & general weathering effects

| Part No  | Qty | Size           |
|----------|-----|----------------|
| FX081126 | 6   | 400 ml Aerosol |



## FIXT ELECTRICAL CLEANER

A general purpose solvent cleaner designed to remove contaminations

- Powerful spray loosens & blasts away contamination
- Fast evaporating, leaves no residue  
Removes most contaminants including grease, tar, dirt & oil

| Part No  | Qty | Size           |
|----------|-----|----------------|
| FX081350 | 6   | 400 ml Aerosol |



SEE FULL FIXT RANGE  
ON PAGES  
472 - 489  
OF OUR  
PRODUCT  
CATALOGUE



## FIXT CERAMIC GREASE

A high quality formulated grease for the lubrication of automotive brake callipers

- Designed for those using electronic ABS braking systems requiring a non-conductive grease.
- High temperature range -40°C to +1200°C, non-melting formula, highly water resistant, copper free, electrically non-conductive.
- As the grease is free from copper additives it's suitable for use with aluminium brake components.



| Part No  | Qty | Size     |
|----------|-----|----------|
| FX081165 | 1   | 500G Tin |

## FIXT COPPER GREASE COMPOUND

Premium quality grease designed specifically for use on moving metal parts

- For protection against heat, seizure, corrosion, water & acid
- Once applied, product applies a protective film that will not burn or wash off



| Part No  | Qty | Size     |
|----------|-----|----------|
| FX081155 | 1   | 500G Tin |

## FIXT LITHIUM GREASE

Designed for use in modern constant velocity joints found on trucks, vans & cars

- Designed for use in modern constant velocity joints found on trucks, vans & cars
- The sold additives adhere to metal surfaces where required under pressure, to provide a long life lubricant film



| Part No  | Qty | Size           |
|----------|-----|----------------|
| FX081158 | 12  | 400g Cartridge |
| FX081160 | 6   | 500g Tin       |

## FIXT DIESEL TREATMENT

- CO<sup>2</sup> Diesel
- Increased fuel economy
- Reduces black smoke
- Reduces white start up smoke
- Cleans combustion chamber

| Part No  | Qty | Size   |
|----------|-----|--------|
| FX081502 | 6   | 325 ml |



## FIXT ENGINE FLUSH

- Suitable for petrol & diesel engines
- Neutralises acid residue
- Removes harmful deposits
- Improves oil circulation
- Cleans engine in 5 mins



| Part No  | Qty | Size   |
|----------|-----|--------|
| FX081504 | 6   | 325 ml |

## FIXT PETROL INJECTOR CLEANER

- Increased fuel economy
- Cleans combustion chamber, intake manifold and valves
- Prevents spark plug fouling



| Part No  | Qty | Size   |
|----------|-----|--------|
| FX081506 | 6   | 325 ml |



## FIXT SUPER GLUE

- Low viscosity
- Instant adhesive
- High strength, rapid bonding

| Part No  | Qty | Size        |
|----------|-----|-------------|
| FX085551 | 5   | 3g Tubes    |
| FX085556 | 3   | 20g Bottles |

## FIXT SUPER GLUE ACTIVATOR

Reduces fixing times & ensures adhesive is fully cured. Reduces odour & blooming. Suitable for uPVC, plastic, glass & metal. Designed for use in modern constant velocity joints found on trucks, vans & cars



| Part No  | Qty | Size           |
|----------|-----|----------------|
| FX085569 | 1   | 200 ml Aerosol |

## FIXT SILICONE SEALANT

- Gasketing, sealing & bonding compound

| Part No  | Qty | Size   | Colour |
|----------|-----|--------|--------|
| FX085530 | 3   | 300 ml | Black  |



## FIXT HQ SILICONE SEALANT

A high quality universal gasket sealant to replace all types of pre-formed gaskets

- Highly resistant to extreme conditions, oils, greases, transmission fluid & anti-freeze
- Max temperature: Black: -50°C to 180°C, Red: -60°C to 260°C.



| Part No  | Qty | Size             | Colour |
|----------|-----|------------------|--------|
| FX085532 | 1   | 200 ml Cartridge | Black  |
| FX085533 | 1   | 200 ml Cartridge | Red    |

## FIXT AIR-CON REFRESHER

- Cleans and refreshes air conditioning systems
- Eliminates odours
- Maximising efficiency of cooling & heating functions
- Fast, effective and simple to use

| Part No  | Qty | Size           |
|----------|-----|----------------|
| FX081200 | 12  | 90 ml Aerosols |





# LOCTITE ADHESIVES

## LOCK & SEAL NUTLOCK

- Fast acting
- Locks & seals all threads
- Prevents corrosion
- Allows disassembly

| Part No | Qty | Size        |
|---------|-----|-------------|
| 865604  | 1   | 5 ml Bottle |



## GREEN RETAINER

- High-strength, high temperature resistance.
- Fluorescent.
- Designed for the bonding of cylindrical fitting parts.
- Part of the Health and Safety anaerobic range.

| Part No | Qty | Size         |
|---------|-----|--------------|
| 865619  | 1   | 50 ml Bottle |



## LOCK & SEAL NUTLOCK

- Fast acting
- Locks & seals all threads
- Prevents corrosion
- Allows disassembly

| Part No | Qty | Size         |
|---------|-----|--------------|
| 865605  | 1   | 24 ml Bottle |



## THREADLOCKER

- Medium Strength
- Locks & seals studs
- Seals against corrosion
- Restores worn bearing housings
- Allows disassembly

| Part No | Qty | Size         |
|---------|-----|--------------|
| 865611  | 1   | 10 ml Bottle |



## SUPER GLUE

- Original high performance formula
- Ideal for difficult repair jobs
- Bottle with Easy Brush

| Part No | Qty | Size         |
|---------|-----|--------------|
| 865602  | 1   | 24 ml Bottle |



## SUPER GLUE

- Original high performance formula
- Ideal for difficult repair jobs

| Part No | Qty | Size    |
|---------|-----|---------|
| 865641  | 1   | 3g Tube |



## FREEZE & RELEASE

- Rapidly penetrates due to high capillary action leaving freed parts lubricated & protected from corrosion
- Frees rusted & seized fasteners, fittings & general metal components in automotive & industrial equipments

| Part No | Qty | Size           |
|---------|-----|----------------|
| 865634  | 1   | 400 ml Aerosol |





# TYRE CARE

SCAN QR CODE TO SEE TYRE CARE FLYER



## MOUNTING PASTE

- For all standard mounting applications to car and truck tyres
- Cost-effective for big order quantities

| Part No | Qty | Size        |
|---------|-----|-------------|
| 5931851 | 1   | 5 kg Bucket |



## EMERGENCY TYRE REPAIR KIT

- 12v Compressor & 450ml Sealant.
- Will seal a puncture up to 6mm at the roadside in under 10 minutes.
- Provides a temporary repair enabling the driver to return safely to have the tyre fixed / replaced.
- The sealant is manufactured from natural rubber, meaning the tyre can be washed out at the point of repair.



| Part No | Qty |
|---------|-----|
| RG10040 | 1   |

## BALANCE WEIGHTS Adhesive

- Segments: 4x5g + 4x10g
- Temperature range: -40°C to +250 °C
- Grey
- Size: 19 x 4

| Part No | Qty | Weight |
|---------|-----|--------|
| 5656050 | 100 | 60 g   |



## TYRE PRESSURE GAUGE Digital

- Digital Tyre Pressure & Depth Gauge
- Self-calibrating with a 90 second auto power off function
- Calibration: 0 - 100 psi & 0 - 0.8"



| Part No | Qty |
|---------|-----|
| 805196  | 1   |

## TYRE VALVE 50 mm

- Snap-in Valve
- Hole Size: 11.3 mm
- Thickness: 1.8 - 4 mm
- Ref: 414

| Part No | Qty | Length |
|---------|-----|--------|
| 2122414 | 100 | 50 mm  |



## MINICOMBI PLUG PATCHES

- Combined patch/plug type repair for punctures to the tread of both radial and cross-ply tyres.
- Repair units self-vulcanize in the tyre.
- The tyre & puncture channel are repaired in one operation.



| Part No | Qty | Size | Type |
|---------|-----|------|------|
| 5113058 | 40  | 6 mm | A6   |

# WORKSHOP ESSENTIALS



## ROTARY BARREL PUMP

- Cast iron pump
- Dispenses higher volumes than standard lever pumps
- For lube & diesel fuel only
- For 205 ltr drums

| Part No | Qty |
|---------|-----|
| 635259  | 1   |

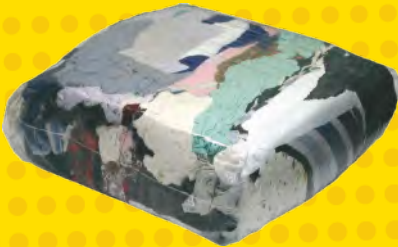
## BLUE ROLL

- 2 ply
- Centre feed continuous sheet
- 895239 is centre feed roll

| Part No | Qty     | Size           | Type        |
|---------|---------|----------------|-------------|
| 895230  | 2 Rolls | 280 mm x 400 m | Standard    |
| 895239  | 6 Rolls | 185 mm x 125 m | Centre Feed |



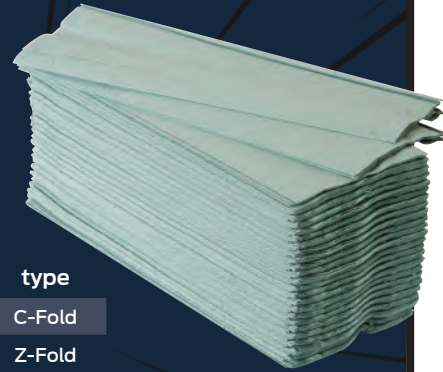
## RAGS-IN-A-BAG



| Part No | Qty       | Size            |
|---------|-----------|-----------------|
| 895416  | 2 x 10 kg | General Purpose |
| 895778  | 2 x 10 kg | Coloured Cotton |

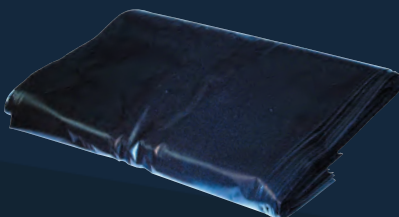
## PAPER TOWELS

- Paper towels help prevent cross contamination through minimal contact
- Made from 100% recycled paper
- Wall Dispensers also available



| Part No | Qty | Colour | type   |
|---------|-----|--------|--------|
| 895238  | 240 | Green  | C-Fold |
| 895655  | 250 | Blue   | Z-Fold |

## REFUSE SACKS Black



| Part No | Qty | Size            |
|---------|-----|-----------------|
| 895296  | 50  | 18" x 29" x 34" |
| 895896  | 200 | 18" x 29" x 34" |

## TOILET ROLLS

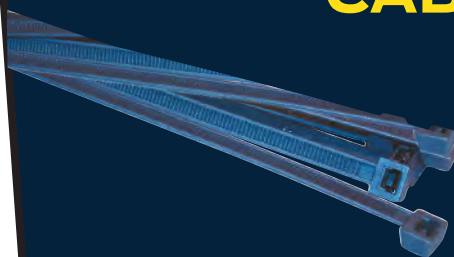


| Part No | Qty | Size          |
|---------|-----|---------------|
| 895191  | 36  | 90 mm x 33 m  |
| 895265  | 12  | 95 mm x 150 m |



# CABLE TIES & TAPES

## CABLE TIES Silver



- High grade nylon 6.6

| Part No | Qty | Length | Width  |
|---------|-----|--------|--------|
| 245509  | 100 | 295 mm | 4.8 mm |

## CABLE TIE DISPENSER BOX With Cable Ties

- Black Ties: 2.5 x 100mm (200), 3.6 x 140mm (200), 4.8 x 200mm (100), 4.8 x 300mm (100), 4.8 x 370mm (100), 7.6 x 370mm (100). Silver Ties: 4.8 x 300mm (100). Assorted Colours: 4.8 x 200mm (100)

| Part No | Qty   |
|---------|-------|
| 110301  | 1,000 |



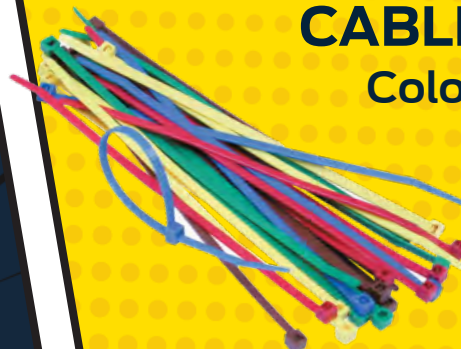
## CABLE TIES Black



| Part No | Qty | Width  | Length |
|---------|-----|--------|--------|
| 245501  | 100 | 2.5 mm | 100 mm |
| 245502  | 100 | 3.6 mm | 140 mm |
| 245503  | 100 | 4.8 mm | 200 mm |
| 245504  | 100 | 4.8 mm | 295 mm |
| 245505  | 100 | 4.8 mm | 370 mm |
| 245506  | 100 | 7.6 mm | 370 mm |

- High grade nylon 6.6

## CABLE TIES Coloured

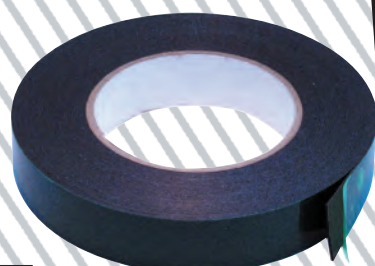


- High grade nylon 6.6
- Red, Blue, Yellow, Green & Brown

| Part No | Qty | Size         |
|---------|-----|--------------|
| 245205  | 100 | 200 x 4.8 mm |

## FOAM TAPE Double Sided

- Black
- 10 m rolls
- For external / automotive use



| Part No | Qty | Width      |
|---------|-----|------------|
| 895098  | 2   | 25 mm (1") |

## INSULATION TAPE Black PVC

- Flame retardant
- 19 mm x 20 m Rolls



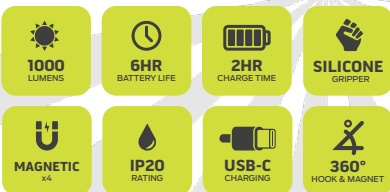
| Part No | Qty      | Colour |
|---------|----------|--------|
| 225279  | 10 Rolls | Black  |

# VISION LIGHTING

SCAN QR  
CODE TO SEE  
FULL VISION  
RANGE



## MULTI POSITION 40 SMD LED UNDER BONNET LAMP



Part No Qty  
EHL1010 1



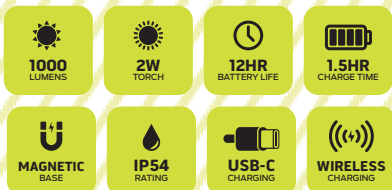
## 10W Multi Position COB LED Inspection Lamp



Part No Qty  
EHL1000 1



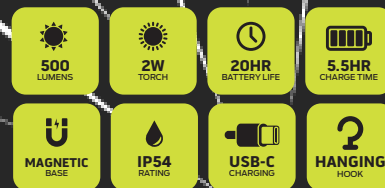
## 1000LM COB SLIM INSPECTION LAMP



Part No Qty  
EHLW420 1



## COB SLIMLINE INSPECTION LAMP & TORCH



Part No Qty  
EHL305 1



## 350LM LED MOTION SENSOR HEAD TORCH



Part No Qty  
ETL201 1

## 300LM FLEXIBLE LED NECK TORCH

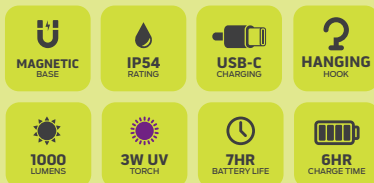


Part No Qty  
ETL202 1





## SMD COMPACT HAND LAMP & UV TORCH



Part No Qty

EHL301 1

## SMD FLEXIBLE MAGNETIC HAND LAMP/TORCH



Part No Qty COLOUR

EHL300LR 1 Orange

EHL300LY 1 Yellow

# FASTENERS

## NUMBER PLATE FIXINGS

### Flip-Top Screws

| Part No | Qty | Size     | Colour |
|---------|-----|----------|--------|
| 975309  | 100 | 8 x 3/4" | White  |
| 975310  | 100 | 8 x 3/4" | Yellow |
| 975311  | 100 | 8 x 3/4" | Black  |
| 975308  | 100 | 8 x 3/4" | Blue   |
| 975307  | 100 | 8 x 3/4" | Green  |



## NUMBER PLATE FIXINGS

### Plastic headed screws

- PZD self tapping screws
- Zinc plated

| Part No | Qty | Size | Colour |
|---------|-----|------|--------|
| 975320  | 100 | 3/4" | White  |
| 975321  | 100 | 3/4" | Yellow |
| 975322  | 100 | 3/4" | Black  |
| 975323  | 100 | 3/4" | Blue   |
| 975330  | 100 | 3/4" | Green  |
| 975325  | 100 | 1"   | White  |
| 975326  | 100 | 1"   | Yellow |
| 975327  | 100 | 1"   | Black  |
| 975328  | 100 | 1"   | Blue   |
| 975329  | 100 | 1"   | Green  |



## NUMBER PLATE PADS

Self adhesive double sided pads

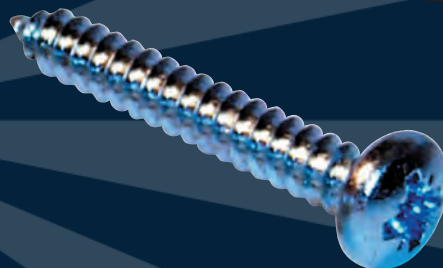
| Part No | Qty | Size       |
|---------|-----|------------|
| 705099  | 50  | 75 x 25 mm |



## SELF TAPPING SCREW PZD Pan Head

- Zinc plated
- DIN 7981

| Part No | Qty | Size  | Length |
|---------|-----|-------|--------|
| 925263  | 200 | No.10 | 3/4"   |



# ACE HOSE CLIPS

SEE FULL  
ACE RANGE  
IN OUR  
DEDICATED  
BROCHURE



## ACE HOSE CLIP DISPENSER With Pipe Clips

- Zinc plated mild steel (W1)
- 12 mm band (9 mm)
- DIN 3017
- Hose Clips:  
Contains 10 of each  
size: 12\*, 16\*, 22\*, 27,  
32, 35, 40, 45, 50, 60.
- Pipe Clips: Contains  
20 of each size:  
7-11 mm, 11-19 mm



Part No

Qty

ACE1361

Set of 140

## ACE MINI CLAMP RACK



- Zinc plated mild steel (W1)
- Contains 10 of each size: 7-9 to 16-18 mm

Part No

Qty

ACE1657

Set of 100

## ACE HOSE CLIPS

White zinc plated  
mild steel.

48 hours in salt  
spray.  
Worm drive screw.

Manufactured to  
DIN 3017



| Part No | Qty | Size        | Colour       | Band  |
|---------|-----|-------------|--------------|-------|
| ACE1025 | 10  | 12 (000)    | 8 - 12 mm    | 9 mm  |
| ACE1026 | 10  | 16 (M00)    | 10 - 16 mm   | 9 mm  |
| ACE1027 | 10  | 22 (00 & 0) | 12 - 22 mm   | 9 mm  |
| ACE1102 | 10  | 27 (0X)     | 16 - 27 mm   | 12 mm |
| ACE1103 | 10  | 32 (1A)     | 20 - 32 mm   | 12 mm |
| ACE1104 | 10  | 35 (1)      | 23 - 35 mm   | 12 mm |
| ACE1105 | 10  | 40 (1X)     | 25 - 40 mm   | 12 mm |
| ACE1106 | 10  | 45 (1M)     | 30 - 45 mm   | 12 mm |
| ACE1107 | 10  | 50 (2A)     | 32 - 50 mm   | 12 mm |
| ACE1108 | 10  | 60 (2 & 2X) | 40 - 60 mm   | 12 mm |
| ACE1109 | 10  | 70 (3)      | 50 - 70 mm   | 12 mm |
| ACE1110 | 10  | 80 (3X)     | 60 - 80 mm   | 12 mm |
| ACE1111 | 10  | 90 (4)      | 70 - 90 mm   | 12 mm |
| ACE1112 | 10  | 100 (4X)    | 80 - 100 mm  | 12 mm |
| ACE1114 | 10  | 120 (5)     | 100 - 120 mm | 12 mm |
| ACE1116 | 10  | 140 (6)     | 120 - 140 mm | 12 mm |
| ACE1118 | 10  | 160 (7)     | 140 - 160 mm | 12 mm |

## ACE CHIMNEY BOX DISPENSER RACK

- Dispenses single  
hose clips
- Non perforated  
band DIN 3017 clips
- Contains 5  
Chimneys:  
08 - 12 mm = 70 pcs.  
10 - 16 mm = 70 pcs.  
12 - 22 mm = 70 pcs.  
16 - 27 mm = 30 pcs x2.



Part No

Qty

ACE1510

Set of 270



# ABSORBENTS

## NEW SAFETY TREAD Absorbent Granules

- Suitable for use on strong chemicals
- Premium quality, non-dusting, Danish pink absorbent granule
- Remains granular even when saturated

| Part No | Qty            |
|---------|----------------|
| 865180  | 1 x 30 Ltr Bag |



## MULTI-ZORB Absorbent Granules

- Ideal for use in car bays, machine shops, factory floors, warehouses, oil refineries, packaging plant, garages, forecourts
- Non-toxic, non-abrasive & relatively dust free

| Part No | Qty            |
|---------|----------------|
| 895293  | 1 x 20 Ltr Bag |



## ISOL8 ABSORBENT

- Isol8 is one of the most effective & advanced absorbents available
- Unique amongst loose absorbents, being 100% organic, recycled waste material from totally sustainable resources
- Absorbs up to 6 times more than clay granules
- Non-leach properties keep contaminants locked inside



| Part No | Qty            |
|---------|----------------|
| 895295  | 1 x 1.3 kg Bag |

## ABSORBENT PADS

- Universal industrial grade absorbent pads



| Part No | Qty | Type        | Abs. Capacity |
|---------|-----|-------------|---------------|
| 865173  | 100 | Heavyweight | 70 Litres     |
| 865174  | 200 | Lightweight | 50 Litres     |

SCAN QR CODE TO SEE  
SPILL CONTROL  
BROCHURE





# ABRACS ABRASIVES

SCAN QR  
CODE TO  
SEE  
ABRACS  
BROCHURE



## HUB CLEANING TOOL SET

- Gives operators a quick and effective means of removing rust from the brakes, rotor and hub
- A long lasting heavy duty tool which saves times
- The 5 pc kit contains 1 x 1/2" drive socket & 4 x threaded poly disc
- Suitable for use on a variety of materials such as alloys and rust



| Part No | Qty |
|---------|-----|
| 835626  | 5   |

## SPINDLE MOUNTED WIRE WHEEL

- Crimped wire wheel
- Multi purpose
- 6 mm Spindle
- 50 mm diameter



| Part No | Qty |
|---------|-----|
| 895377  | 1   |

## QUICK LOCK Assorted Pack

- Contains: 2 x 50 mm backing pad adaptor, 7 x polirico discs (2 x coarse, fine & 3 x medium), 9 x 50 mm sanding discs (3 x coarse, medium & fine), 3 x 50 mm poly discs, 4 x 50 mm flap discs (1 x P40, P60, P80, P120)



| Part No | Qty    |
|---------|--------|
| 105290  | 25 Pcs |

## SPINDLE & SCRATCH BRUSH PACK

- 4pc Spindle Mounted & Scratch Brush Pack contains 1x 75mm Circular Brush, 1x 50mm Cup Brush, 1x 20mm End Brush & 1x General Purpose Scratch Brush



| Part No | Qty   |
|---------|-------|
| 896980  | 4 Pcs |

## HSS JOBBER DRILL CASE SET

- Right hand
- General purpose
- In high quality cantilever cases



| Part No | Qty   | Size                        |
|---------|-------|-----------------------------|
| 825157  | 1 Set | 1.0 - 13.0 mm (in 0.5 mm's) |

## COBALT DRILL SET

- Sizes: 1.0-10.0mm (in 0.5mm increments)



| Part No | Qty       |
|---------|-----------|
| 825345  | 19 Pc Set |



# HAND CARE

## ANTIBACTERIAL WIPES



- Strong, white sanitising wipes suitable for use on hands and surfaces.

| Part No | Qty |
|---------|-----|
| 895500  | 100 |

## ULTRAGRIME WIPES Multi-use

- Huge Wipes - 38cm x 25cm.
- Double the size of common wipes
- Stays wet and usable for over 1 hour out of the pack
- Do not dry out when lid is left open for weeks
- Super-soft and strong - more like a cloth



| Part No | Qty |
|---------|-----|
| 865484  | 100 |

## ULTRAGRIME WIPES Power Scrub



- Huge Wipes - 38cm x 25cm.
- Double the size of common wipes
- Stays wet and usable for over 1 hour out of the pack
- Do not dry out when lid is left open for weeks
- Super-soft and strong - more like a cloth

| Part No | Qty |
|---------|-----|
| 865487  | 100 |

## SWARFEGA HD HAND CLEANER

- Heavy duty hand cleaner with non-abrasive micro polymer granules
- Contains hydrocarbon solvent to dissolve oil & grease



| Part No | Qty | Size        |
|---------|-----|-------------|
| 865540  | 4   | 4 Ltr       |
| 865541  | 4   | 4.5 Ltr Jar |
| 865542  | 1   | 15 Ltr Tub  |

## SWARFEGA HAND CLEANER Orange

- Heavy duty hand cleaner with polygrains
- Remove ingrained oil, grease & grime
- Solvent-free



| Part No | Qty       |
|---------|-----------|
| 865545  | 4 x 4 Ltr |

# ASSORTED BOXES

## DISPLAY RACK FOR ASSORTED BOXES

- Holds up to 10 assorted boxes
- Can be free standing or wall mounted
- NOT suitable for mini-boxes

| Part No | Qty |
|---------|-----|
| 105201  | 1   |

\*Boxes not included



## SUMP PLUG WASHERS Assorted Box

- Copper, copper compression, nylon, aluminium washers & bonded seals
- Suits: BMW, Ford, Vauxhall, VW, Peugeot, Citroen, Renault, Honda, Rover, Volvo

| Part No | Qty |
|---------|-----|
| 105187  | 250 |



## DRIVE RIVETS Assorted Box

- Contains: Push type retainers & Push rivets.
- Suits: Audi, BMW, Ford, GM, Honda, Land Rover, Mercedes, Mitsubishi, Nissan, PSA, Toyota & VW

| Part No | Qty |
|---------|-----|
| 105076  | 88  |



## SELF TAPPING SCREWS Black - PZD Flange

- Chemical black
- Sizes: No. 6 (3.5 mm)  
- No. 10 (4.8 mm)

| Part No | Qty |
|---------|-----|
| 105105  | 700 |



## BALANCE WEIGHTS Assorted Box

- Coated for steel rims
- Sizes: 5, 10, 15, 20, 25, 30, 35, 40, 45, 50g

| Part No | Qty |
|---------|-----|
| 105235  | 60  |





## ACME SCREWS

### Assorted Box

- Zinc plated
- Hexagon head
- Sizes: No. 8 x 3/4", No. 10 x 1/2", 3/4", No. 12 x 1/2", 3/4", No. 14 x 3/4"

Part No Qty

105106 255



## HEATSHRINK TUBING

### Assorted Box

- Sizes: 3.2, 4.8, 6.4 x 50 mm, 12.7 x 70 mm (diameter x length).
- Colours: Black, Blue, Red, Yellow

Part No Qty

105186 160



## TRIM PANEL CLIPS

### Assorted Box

- Suits: Audi, BMW, Ford, GM, Kia, Mazda, PSA, Toyota & VW
- Contains: Panel clips, Moulding clips & Panel retainers. Suits: Audi, BMW, Ford, GM, Kia, Mazda, PSA, Toyota & VW

Part No Qty

105078 130



## CV CLIPS - STAINLESS

- Stainless Steel
- Sizes: 25 - 50 mm x 10, 40 - 110 mm x 5

Part No Qty

110165 15



## MINI FUSES -

### LOW PROFILE

### Assorted Box

- Amperages: 3, 4, 5, 7.5, 10, 15, 20, 25, 30 amp

Part No Qty

105282 150



## PLASTERS

### Assorted Box

- Stretch Fabric & Waterproof
- Individually wrapped
- Adhesive Plasters
- Various Sizes

Part No Qty

105260 120



# BATTERIES



## INDUSTRIAL ALKALINE BATTERIES

| Part No | Qty | Size                | Voltage |
|---------|-----|---------------------|---------|
| 275291  | 10  | AAA (LR03 / MN2400) | 1.5v    |
| 275290  | 10  | AA (LR6 / MN1500)   | 1.5v    |
| 275292  | 12  | C (LR14 / MN1400)   | 1.5v    |
| 275293  | 12  | D (LR20 / MN1300)   | 1.5v    |
| 275294  | 12  | 9v (6LR / MN1604)   | 9v      |

## ALKALINE BATTERIES

The original copper top battery



| Part No | Qty | Size                | Voltage |
|---------|-----|---------------------|---------|
| 275274  | 40  | AAA (LR03 / MN2400) | 1.5v    |
| 275273  | 80  | AA (LR6 / MN1500)   | 1.5v    |
| 275272  | 20  | C (LR14 / MN1400)   | 1.5v    |
| 275275  | 10  | 9v (6LR / MN1604)   | 1.5v    |

## LITHIUM COIN BATTERIES

| Part No | Qty | Size   | Volt |
|---------|-----|--------|------|
| 275234  | 20  | CR2032 | 3v   |
| 275235  | 100 | CR2032 | 3v   |
| 275236  | 20  | CR2025 | 3v   |
| 275237  | 100 | CR2025 | 3v   |
| 275238  | 20  | CR2016 | 3v   |
| 275239  | 100 | CR2016 | 3v   |



## LITHIUM COIN BATTERIES

| Part No | Qty | Size   | Volt |
|---------|-----|--------|------|
| 275105  | 5   | CR1220 | 3v   |
| 275101  | 5   | CR1616 | 3v   |
| 275106  | 5   | CR1620 | 3v   |
| 275102  | 5   | CR2016 | 3v   |
| 275103  | 5   | CR2025 | 3v   |
| 275104  | 5   | CR2032 | 3v   |
| 275116  | 5   | CR2430 | 3v   |

**Energizer**



**CHECK OUT OUR FULL RANGE  
OF CONSUMABLES IN OUR  
CONSUMABLES CATALOGUE  
OR BY VISITING OUR WEBSITE**

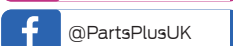
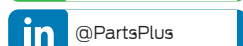
**7,000+ PRODUCTS      20+ CATEGORIES**

**SCAN QR  
TO VIEW  
WEBSITE**



### Terms and Conditions

For more information please contact your local PartsPlus Centre. Images are for illustration purposes only. All information and images correct at time of printing and supplied by Quest Consumables. PartsPlus is an unlimited liability company registered in England and Wales: No.3853720, Registered Office: Arterial Road, Laindon, Essex, England, SS15 6EE.



**SCAN QR CODE  
To find your  
nearest PartPlus  
Centre**

